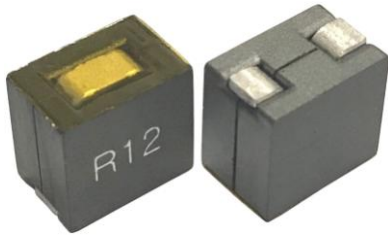


BPMV Series



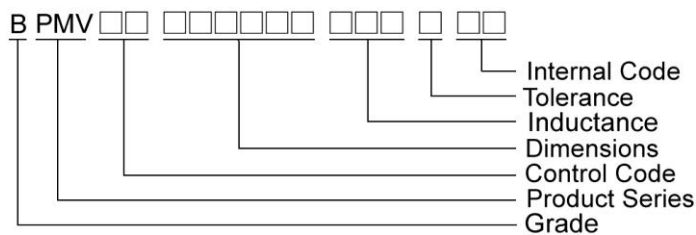
Features

- RoHS, Halogen Free and REACH Compliance
 - Surface mount inductors designed for high speed, high current switch mode applications requiring lower inductance
 - Gapped ferrite cores for maximum efficiency
- Customized specifications are available

Applications

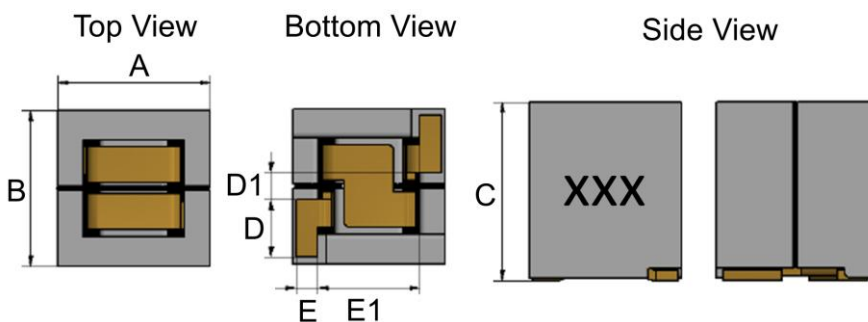
- Voltage regulator modules (VRMs) for servers, microprocessors
- High frequency, high current switching power supplies

Product Identification

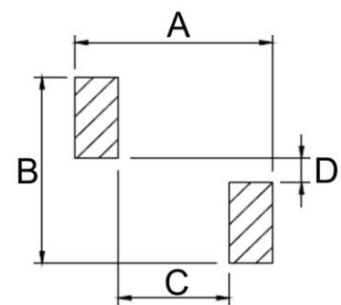


Shape and Dimensions

BPMV00070795/070796



Recommended Pattern



Dimensions in mm

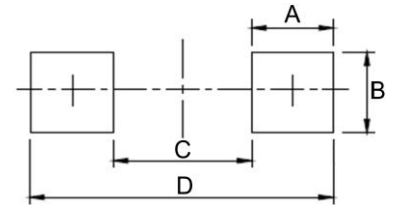
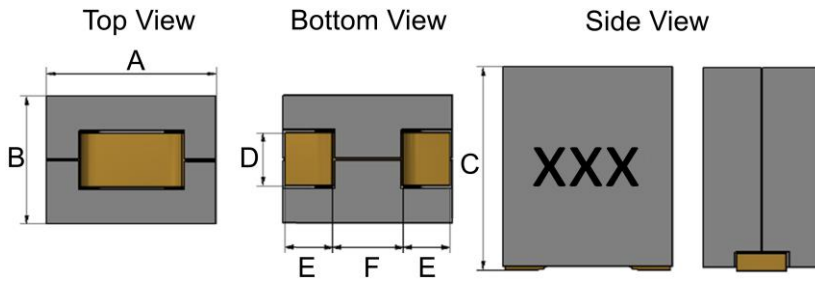
TYPE	Shape and Dimensions							Recommended Pattern			
	A	B	C	D	D1	E	E1	A	B	C	D
BPMV00070795	6.5Max	6.6Max	9.5Max	2.1	1.5	1.0	3.9	6.5	6.2	3.5	1
BPMV00070796	6.5Max	6.5Max	9.6Max	2.1	1.5	1.0	3.9	6.5	6.2	3.5	1

SMD Shielded Power Inductors – BPMV Series

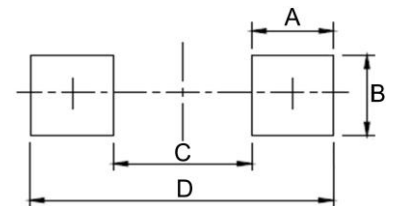
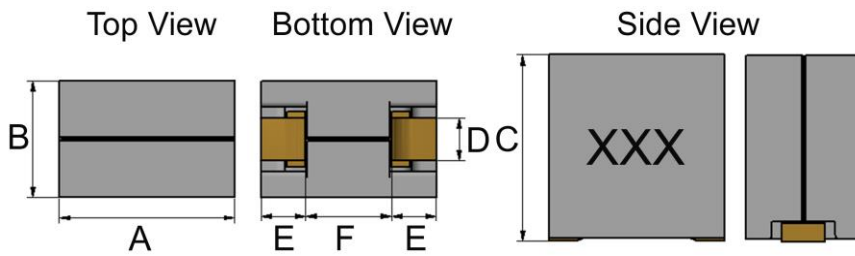
Shape and Dimensions

Recommended Pattern

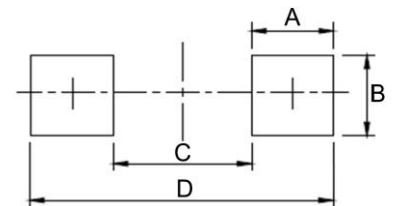
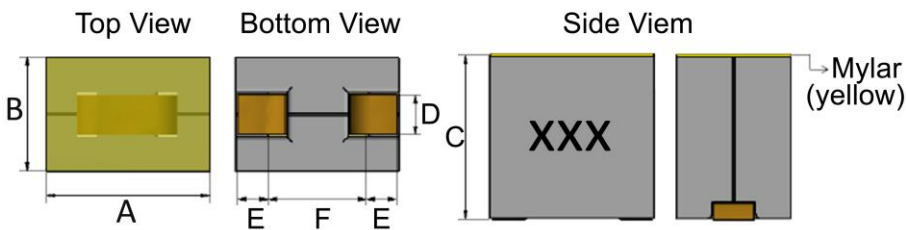
BPMV00080812/110812



BPMV00100612-0E



BPMV00100690/100710/110812-0E



Dimensions in mm

TYPE	Shape and Dimensions						Recommended Pattern			
	A	B	C	D	E	F	A	B	C	D
BPMV00080812	7.6Max	8.1Max	12Max	4.4±0.1	2	3.1	2.5	4.9	2.6	7.6
BPMV00100612	10Max	6Max	12Max	2.4	2.25	5.0	3.2	3.3	3.9	10.3
BPMV00100690	9.6Max	6.4Max 0.09uH 6.45Max	9.0Max	2.6	2.5	4.0	3.2	3.1	3.5	9.9
BPMV00100710	10Max	7.0Max	10Max	2.4±0.2	2.4	4.2	3.3	3.0	4.4	11.0
BPMV00110812	10.7Max	7.5Max	12Max	3.1	2.8	4.4	3.6	3.6	3.7	10.9

SMD Shielded Power Inductors – BPMV Series

Standard Specifications

Part Number	Inductance (uH)	Tolerance (±%)	Test Frequency (kHz)	RDC (mΩ)±15%	(A)Typ		Irms (A)Typ	Marking
					Isat 1	Isat 2		
BPMV00070795R20□2F	0.2	10,15,20	100	0.85	66	52	28	R20

Note: When ordering, please specify tolerance code. Tolerance: K=±10% , L=±15% , M=±20%

- Operating temperature range - 40°C ~ 125°C(Including self - temperature rise)
- Isat 1 : Based on inductance change (L(uH) : 0.128 Min (0.16 Typ)) @ ambient temp. 25°C
- Isat 2 : Based on inductance change (L(uH) : 0.128 Min (0.16 Typ)) @ ambient temp. 100°C
- Irms for a 40°C temperature rise from 25°C ambient with current
- Rated DC Current : The less value which is Isat 1 or Irms

SMD Shielded Power Inductors – BPMV Series

Standard Specifications

Part Number	Inductance (uH)	Tolerance (±%)	Test Frequency (kHz)	RDC (mΩ)±15%	FLL (uH)Typ	Isat 1 (A)Typ 25°C	Isat 2 (A)Typ 100°C	Irms (A)Typ	Marking
BPMV00070796R40□2E	0.4	10,15,20	100	0.85	0.32	30	24	28	R40
BPMV00070796R60□2E	0.6	10,15,20	100	0.85	0.48	20	16	28	R60
BPMV000707961R0□2E	1.0	10,15,20	100	0.85	0.80	11	10	28	1R0

Note: When ordering, please specify tolerance code. Tolerance: K=±10% , L=±15% , M=±20%

- Operating temperature range - 40°C ~ 125°C(Including self - temperature rise)
- Full load Inductance(FLL) Test Parameters : 100kHz/1.0V, Isat 1(25°C) & Isat 2(100°C)
- Irms for a 40°C temperature rise from 25°C ambient with current
- Rated DC Current : The less value which is Isat 1 or Irms

SMD Shielded Power Inductors – BPMV Series

Standard Specifications

Part Number	Inductance (uH)	Tolerance (±%)	Test Frequency (kHz)	RDC (mΩ)±10%	(A)Typ		Irms (A)Typ	Marking
					Isat 1	Isat 2		
BPMV00080812R12□0E	0.12	10,15,20	100	0.155	95	79	60	R12
BPMV00080812R15□0E	0.15	10,15,20	100	0.155	86	73	60	R15
BPMV00080812R17□0E	0.17	10,15,20	100	0.155	75	64	60	R17
BPMV00080812R22□0E	0.22	10,15,20	100	0.155	57	48	60	R22
BPMV00080812R32□0E	0.32	10,15,20	100	0.155	37	31	60	R32

Note: When ordering, please specify tolerance code. Tolerance: K=±10% , L=±15% , M=±20%

- Operating temperature range - 40°C ~ 125°C(Including self - temperature rise)
- Isat 1 : Based on inductance change ($\Delta L/Lo$: drop 20% Typ) @ ambient temp. 25°C
- Isat 2 : Based on inductance change ($\Delta L/Lo$: drop 20% Typ) @ ambient temp. 100°C
- Irms for a 40°C temperature rise from 25°C ambient with current
- Rated DC Current : The less value which is Isat 1 or Irms

SMD Shielded Power Inductors – BPMV Series

Standard Specifications

Part Number	Inductance (uH)	Tolerance (±%)	Test Frequency (kHz)	RDC (mΩ)±10%	Isat 1	Isat 2	Isat 3	Isat 4	Irms (A)Typ	Marking
BPMV00100612R10□0E	0.1	10,15,20	100	0.125	125	105	96	88	77	R10
BPMV00100612R12□0E	0.12	10,15,20	100	0.125	105	93	88	81	77	R12
BPMV00100612R12□0H	0.12	10,15,20	500	0.125	105	93	88	81	77	R12
BPMV00100612R15□0E	0.15	10,15,20	100	0.125	83	75	78	65	77	R15
BPMV00100612R15□0H	0.15	10,15,20	500	0.125	83	75	78	65	77	R15
BPMV00100612R33□0E	0.33	10,15,20	100	0.125	40	33	28	26	77	R33

Note: When ordering, please specify tolerance code. Tolerance: K=±10% , L=±15% , M=±20%

- Operating temperature range - 40°C ~ 125°C(Including self - temperature rise)
- Isat 1 : Based on inductance change ($\Delta L/L_0$: drop 20% Typ) @ ambient temp. 25°C
- Isat 2 : Based on inductance change ($\Delta L/L_0$: drop 20% Typ) @ ambient temp. 75°C
- Isat 3 : Based on inductance change ($\Delta L/L_0$: drop 20% Typ) @ ambient temp. 100°C
- Isat 4 : Based on inductance change ($\Delta L/L_0$: drop 20% Typ) @ ambient temp. 125°C
- Irms for a 40°C temperature rise from 25°C ambient with current
- Rated DC Current : The less value which is Isat 1 or Irms

SMD Shielded Power Inductors – BPMV Series

Standard Specifications

Part Number	Inductance (uH)	Tolerance (±%)	Test Frequency (kHz)	RDC (mΩ)±5%	(A)Typ		Irms (A)Typ	Marking
					Isat 1	Isat 2		
BPMV0010069090N□0E	0.09	10,15,20	100	0.17	125	104	66	90N
BPMV00100690R12□0E	0.12	10,15,20	100	0.17	94	75	66	R12
BPMV00100690R15□0E	0.15	10,15,20	100	0.17	75	55	66	R15
BPMV00100690R21□0E	0.21	10,15,20	100	0.17	50	37.5	66	R21
BPMV00100690R30□0E	0.30	10,15,20	100	0.17	33	29	66	R30

Note: When ordering, please specify tolerance code. Tolerance: K=±10% , L=±15% , M=±20%

- Operating temperature range - 40°C ~ 125°C(Including self - temperature rise)
- Isat 1 : Based on inductance change ($\Delta L/Lo$: drop 20% Typ) @ ambient temp. 25°C
- Isat 2 : Based on inductance change ($\Delta L/Lo$: drop 20% Typ) @ ambient temp. 125°C
- Irms for a 40°C temperature rise from 25°C ambient with current
- Rated DC Current : The less value which is Isat 1 or Irms

SMD Shielded Power Inductors – BPMV Series

Standard Specifications

Part Number	Inductance (uH)	Inductance @ Isat 1 (uH)Typ	Tolerance (±%)	Test Frequency (kHz)	RDC (mΩ)±10%	(A)Typ			Irms (A)Typ	Marking
						Isat 1	Isat 2	Isat 3		
BPMV00100710R10□0E	0.10	0.09	15	100	0.185	113	86	81	68	R10
BPMV00100710R12□0E	0.12	0.12	15	100	0.185	90	80	75	68	R12
BPMV00100710R15□0E	0.15	0.15	15	100	0.185	80	75	73	68	R15
BPMV00100710R33□0E	0.33	0.31	15	100	0.185	43	33	31	68	R33

Note: When ordering, please specify tolerance code. Tolerance: L=±15%

- Operating temperature range - 40°C ~ 125°C(Including self - temperature rise)
- Isat 1 : Based on inductance change ($\Delta L/L_0$: drop 20% Typ) @ ambient temp. 25°C
- Isat 2 : Based on inductance change ($\Delta L/L_0$: drop 20% Typ) @ ambient temp. 100°C
- Isat 3 : Based on inductance change ($\Delta L/L_0$: drop 20% Typ) @ ambient temp. 125°C
- Irms for a 40°C temperature rise from 25°C ambient with current
- Rated DC Current : The less value which is Isat 1 or Irms

SMD Shielded Power Inductors – BPMV Series

Standard Specifications

Part Number	Inductance (μ H)	Tolerance (\pm %)	Test Frequency (kHz)	RDC (m Ω) \pm 5%	(A)Typ		I _{rms} (A)Typ	Marking
					Isat 1	Isat 2		
BPMV00110812R15 \square 0E	0.15	10,15,20	100	0.15	115	97	75	R15
BPMV00110812R18 \square 0E	0.18	10,15,20	100	0.15	85	72	75	R18
BPMV00110812R22 \square 0E	0.22	10,15,20	100	0.15	75	64	75	R22
BPMV00110812R25 \square 0E	0.25	10,15,20	100	0.15	66	56	75	R25
BPMV00110812R27 \square 0E	0.27	10,15,20	100	0.15	60	51	75	R27
BPMV00110812R30 \square 0E	0.30	10,15,20	100	0.15	55	45	75	R30
BPMV00110812R32 \square 0E	0.32	10,15,20	100	0.15	51	43	75	R32

Note: When ordering, please specify tolerance code. Tolerance: K= \pm 10% , L= \pm 15% , M= \pm 20%

- Operating temperature range - 40°C ~ 125°C(Including self - temperature rise)
- Isat 1 : Based on inductance change (Δ L/Lo : drop 20% Typ) @ ambient temp. 25°C
- Isat 2 : Based on inductance change (Δ L/Lo : drop 20% Typ) @ ambient temp. 100°C
- I_{rms} for a 40°C temperature rise from 25°C ambient with current
- Rated DC Current : The less value which is Isat 1 or I_{rms}

SMD Shielded Power Inductors – BPMV Series

Standard Specifications

Part Number	Inductance (uH)	Tolerance (±%)	Test Frequency (kHz)	RDC (mΩ)±10%	FLL (uH)Min	(A)Typ Isat 1	(A)Typ Isat 2	Irms (A)Typ	Marking
BPMV00110812R15□0F	0.15	10,15,20	100	0.15	0.096	115	97	75	R15
BPMV00110812R16□0F	0.16	10,15,20	100	0.15	0.102	99	84	75	R16
BPMV00110812R17□0F	0.17	10,15,20	100	0.15	0.109	91.5	78	75	R17
BPMV00110812R18□0F	0.18	10,15,20	100	0.15	0.115	89	76	75	R18
BPMV00110812R20□0F	0.20	10,15,20	100	0.15	0.128	81	69	75	R20
BPMV00110812R22□0H	0.22	10,15,20	100	0.15	-	75	64	75	R22
BPMV00110812R25□0F	0.25	10,15,20	100	0.15	0.160	66	56	75	R25
BPMV00110812R27□0F	0.27	10,15,20	100	0.15	0.173	60	51	75	R27
BPMV00110812R32□0F	0.32	10,15,20	100	0.15	-	51	43	75	R32
BPMV00110812R40□0F	0.40	10,15,20	100	0.15	0.256	41	35	75	R40
BPMV00110812R47□0F	0.47	10,15,20	100	0.15	0.301	34	29	75	R47
BPMV00110812R60□0F	0.60	15,20	100	0.15	0.384	24.5	21	75	R60

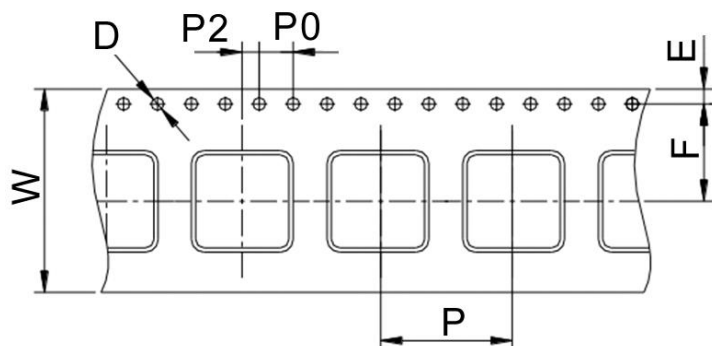
Note: When ordering, please specify tolerance code. Tolerance: K=±10% , L=±15% , M=±20%

- Operating temperature range - 40°C ~ 125°C(Including self - temperature rise)
- Isat 1 : Based on inductance change ($\Delta L/Lo$: drop 20% Typ) @ ambient temp. 25°C (For 0.22,0.32uH)
- Isat 2 : Based on inductance change ($\Delta L/Lo$: drop 20% Typ) @ ambient temp. 100°C (For 0.22,0.32uH)
- Full load Inductance(FLL) Test Parameters : 100kHz/1.0V, Isat 1(25°C) & Isat 2(100°C)
- Irms for a 40°C temperature rise from 25°C ambient with current
- Rated DC Current : The less value which is Isat 1 or Irms

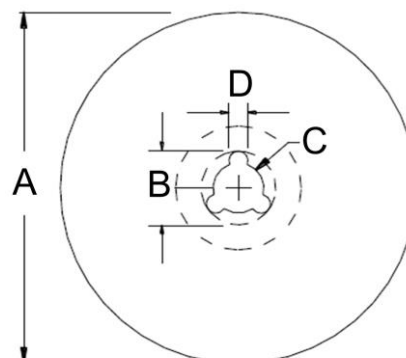
SMD Shielded Power Inductors – BPMV Series

Packaging Specifications

Tape Dimensions



Reel Dimensions



Dimensions in mm

TYPE	Tape Dimensions							Reel Dimensions				Quantity PCS / Reel
	W	D	E	F	P	P0	P2	A	B	C	D	
BPMV00070795	24	1.5	1.75	11.5	12	4	2	330	20	13	2	500
BPMV00070796	24	1.5	1.75	11.5	12	4	2	330	20	13	2	500
BPMV00080812	24	1.5	1.75	11.5	16	4	2	330	20	13	2	300
BPMV00100612	24	1.5	1.75	11.5	16	4	2	330	20	13	2	300
BPMV00100690	24	1.5	1.75	11.5	12	4	2	330	20	13	2	500
BPMV00100710	24	1.5	1.75	11.5	16	4	2	330	20	13	2	350
BPMV00110812	24	1.5	1.75	11.5	16	4	2	330	20	13	2	300